

Five Needle Pine Restoration in Southeastern BC

Randy Moody MSc RPBio



Five Needle Pine Restoration in Southeastern BC

Randy Moody MSc RPBio

Barriers and Solutions







Barriers to Restoration

Barriers to Restoration

- No Seed or Seedlings Available

Barriers to Restoration

- No Seed or Seedlings Available
- Limited Range Data

Barriers to Restoration

- No Seed or Seedlings Available
- Limited Range Data
- No Plans to Guide Local Actions

Barriers to Restoration

- No Seed or Seedlings Available
- Limited Range Data
- No Plans to Guide Local Actions
- Access Constraints

Barriers to Restoration

- No Seed or Seedlings Available
- Limited Range Data
- No Plans to Guide Local Actions
- Access Constraints







Tipi Mountain

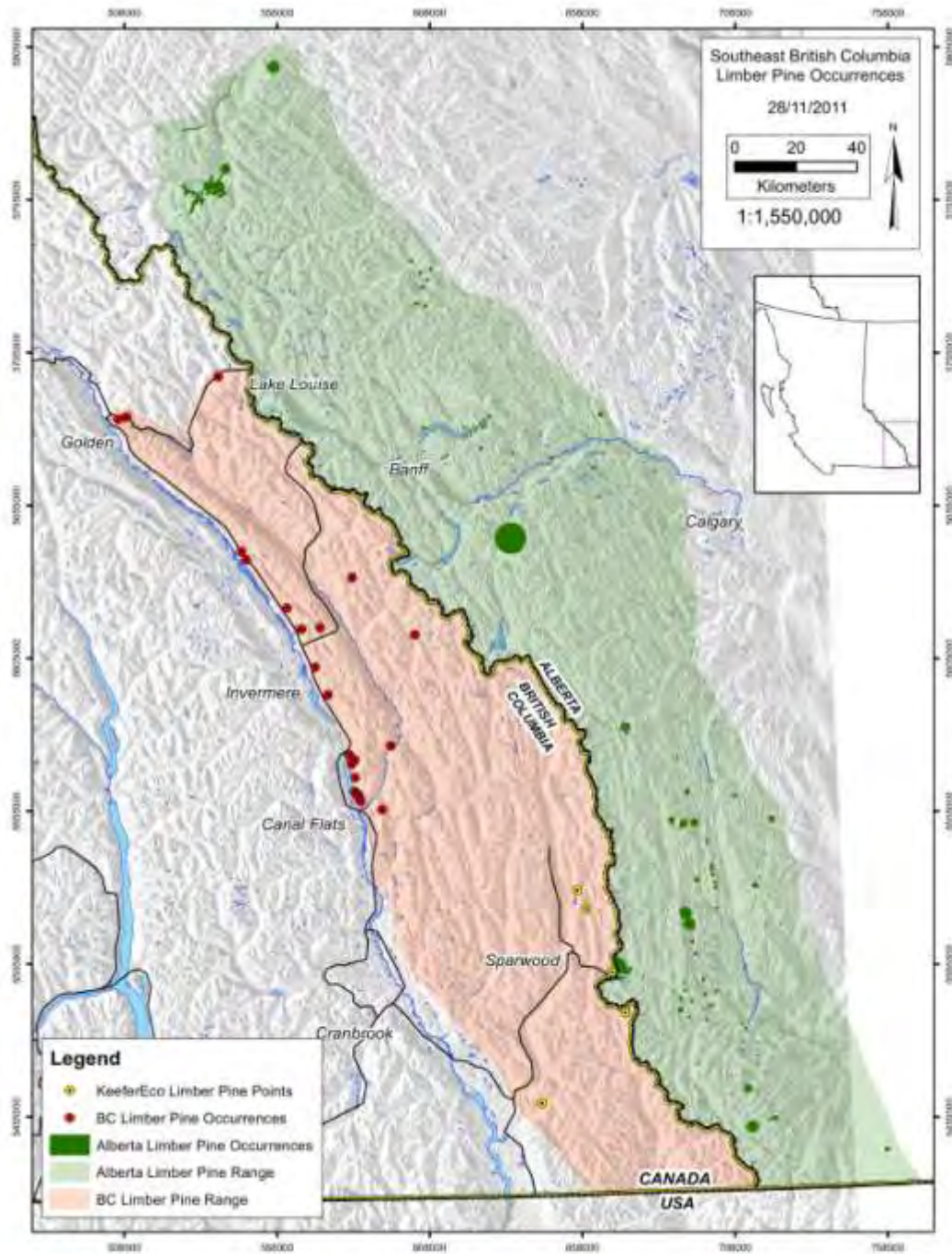
NATIVE PLANTS

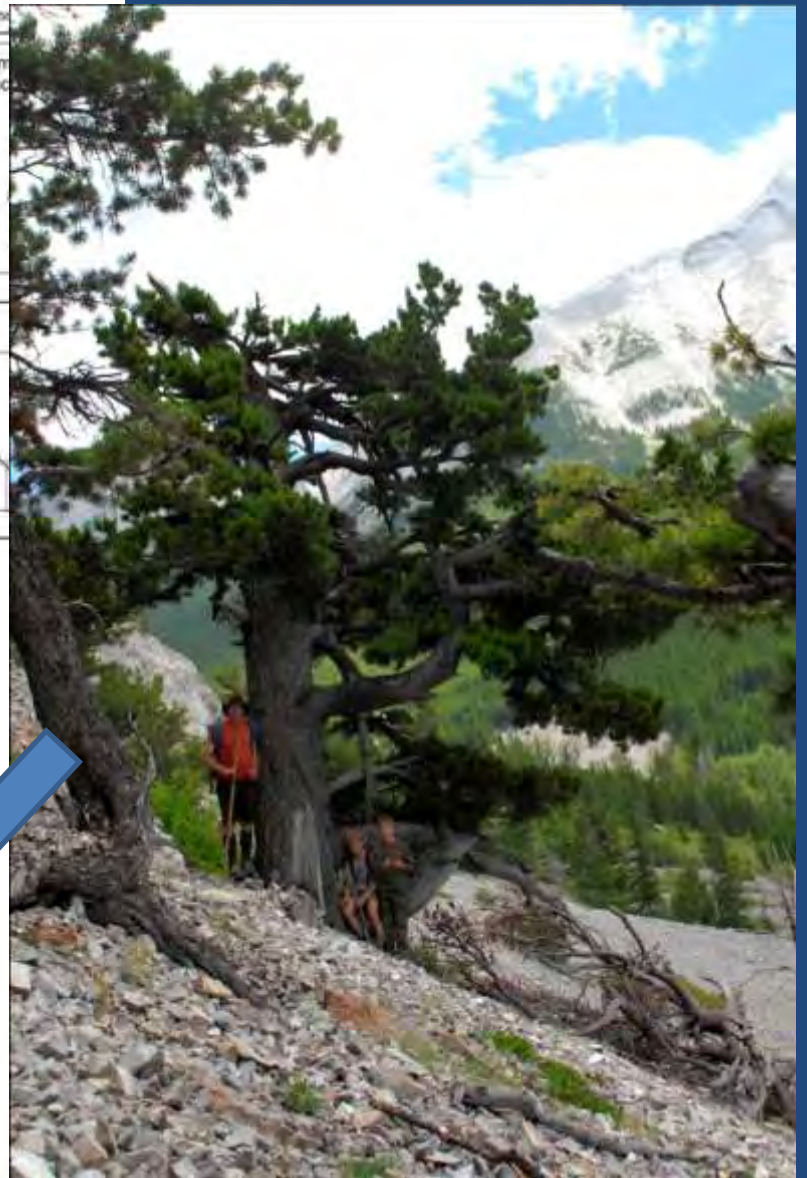
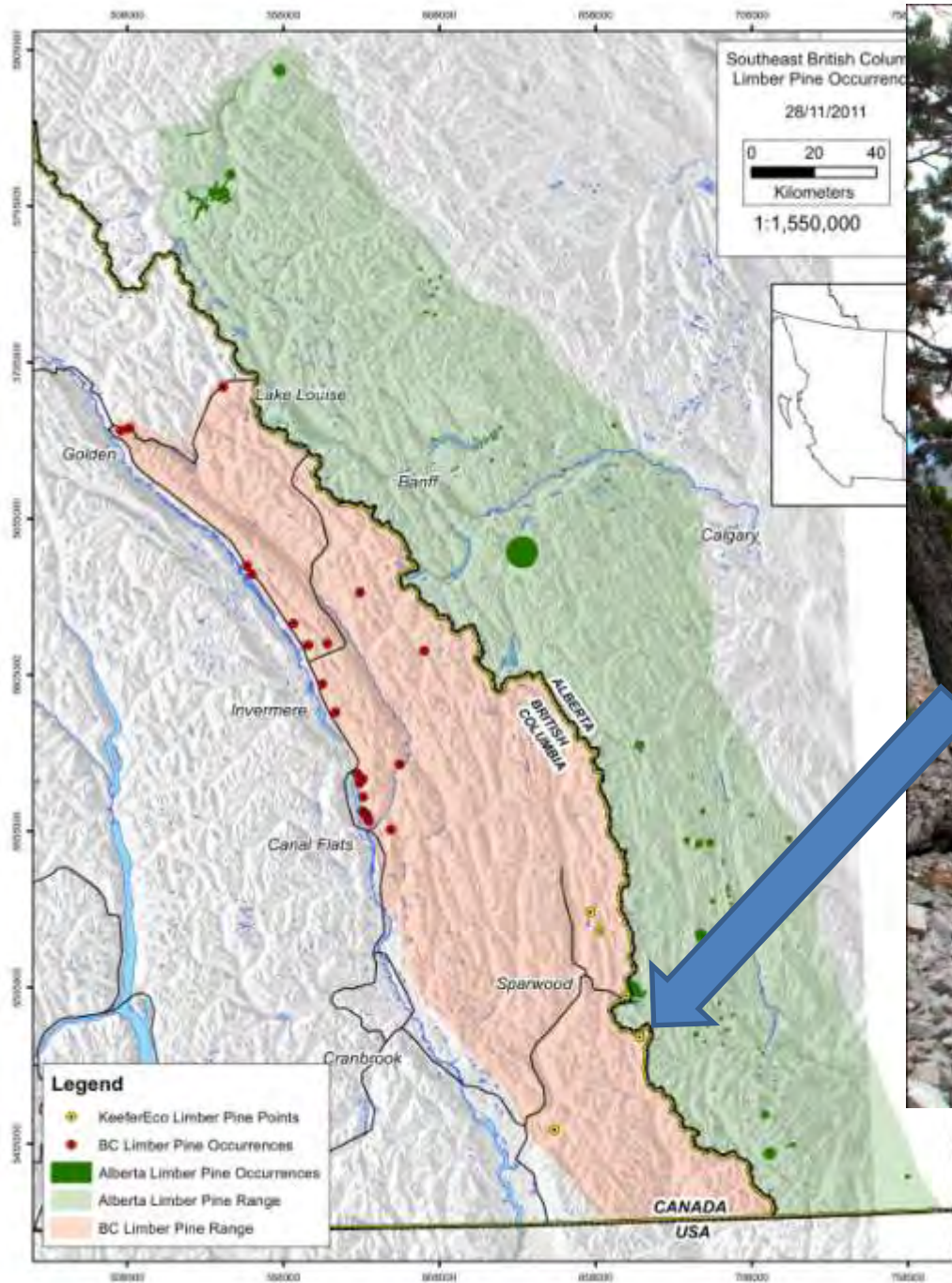
www.TipiMountain.com



Barriers to Restoration

- No Seed or Seedlings Available
- **Limited Range Data**
- No Plans to Guide Local Actions
- Access Constraints





Barriers to Restoration

- No Seed or Seedlings Available
- Limited Range Data
- **No Plans to Guide Local Actions**
- Access Constraints

Nature Conservancy of Canada







Barriers to Restoration

- No Seed or Seedlings Available
- Limited Range Data
- No Plans to Guide Local Actions
- **Access Constraints**







Recommendations

- Bank Seed or Seedlings

Recommendations

- Bank Seed or Seedlings
 - ❖ 3-5 Seedlots to be Registered in 2012

Recommendations

- Bank Seed or Seedlings
 - ❖ 3-5 Seedlots to be Registered in 2012
- Identify Candidate Restoration Areas

Recommendations

- Bank Seed or Seedlings
 - ❖ 3-5 Seedlots to be Registered in 2012
- Identify Candidate Restoration Areas
 - ❖ Get Local Authorities Involved Early On

Recommendations

- Bank Seed or Seedlings
 - ❖ 3-5 Seedlots to be Registered in 2012
- Identify Candidate Restoration Areas
 - ❖ Get Local Authorities Involved Early On
- Identify Motivated Groups and Individuals

Recommendations

- Bank Seed or Seedlings
 - ❖ 3-5 Seedlots to be Registered in 2012
- Identify Candidate Restoration Areas
 - ❖ Get Local Authorities Involved Early On
- Identify Motivated Groups and Individuals
 - ❖ Avoid the Tower Effect

Thank-You

